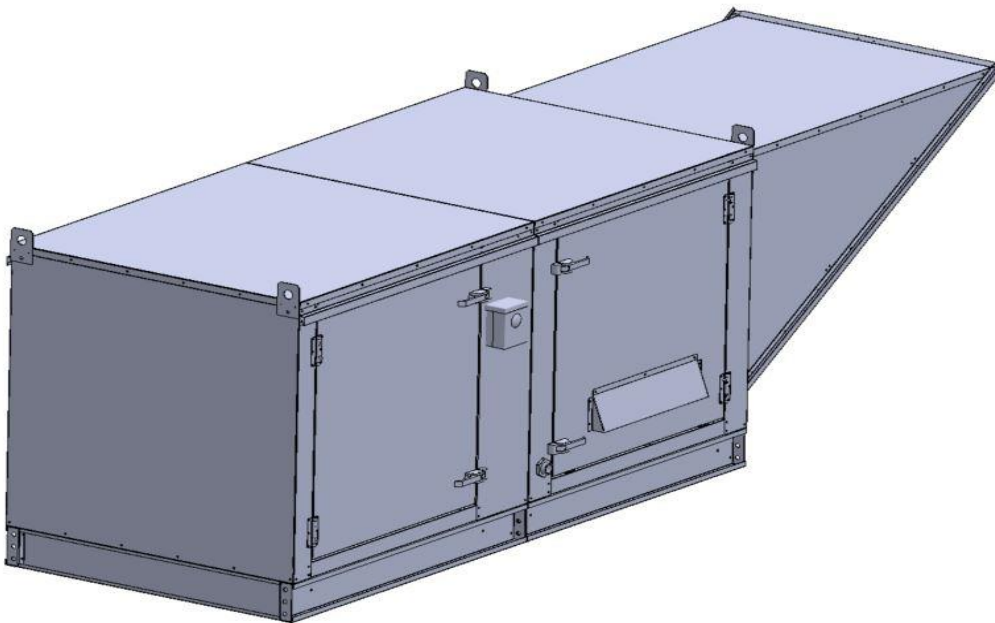


Gas-Fired Tempered Make-Up Air Unit

Model:

TK3-3PH-FF

3-Phase, 208V, 5.00 HP, Belt driven with Motorized Damper and 18" Blower. MAX 7800 CFM's





TK3-750 Direct Fired (1030 lbs.)

Supply Motor:

Model DTP0054, 5.000 HP, 3 Phase, 208 V, 60Hz, 15.0 FLA, ODP, Premium (E-Plus3) Eff.

Supply Motor Pulleys:

<u>Part Type</u>	<u>Qty</u>	<u>Browning #</u>	<u>Turns Out</u>
Blower Pulley	1	2BK120H	
Bushing	1	H-1 3/16	
Motor Pulley	1	2VP65 x 1 1/8	3.0

Burner:

Min Output BTU: 27,500 BTU/Hr
Max Output BTU: 825,000 BTU/Hr
Size: 18" long
Gas Type: Natural

Supply Performance:

Volume: 7800 cfm Volume Range: 3500-7800 cfm
RPM: 872
TS: 4109 ft/min
SP: 0.720" w.g.
0.500" Ext. + 0.172" Int. + 0.048" Opt.
BHP: 4.781

Heating Schedule:

Altitude: 0'
Winter Entering Air Dry Bulb Temp: 0°F
Temp Rise: 98°F
Output BTU: 824999
Input BTU: 896738
BTUs BASED OFF STANDARD AIR DENSITY

Supply Installation Information:

Gas Inlet Pressure: 7 in. w.c. - 14 in. w.c.
Insurance: No Insurance Requirement (ANSI)
Unit Main Input: 20.0 Amps MCA, 30 Amps MOP, 208 V, 12 AWG Wire Min.
Supply Unit Voltage: 3 phs 208 V 60Hz

Construction Features

Housing constructed of heavy duty G90 galvanized steel • Forward curved centrifugal blower wheel • Vibration isolation • Adjustable drive assemblies • Adjustable motor mount • Ball bearing motors • Heavy duty, pre-lubricated bearings rated for 200,000 hours of operation • Static resistant belts • Service doors on both sides • Horizontal & down discharge • Large intake area ensures low pressure drop across unit • Spring loaded profile plates automatically adjust for any airflow - no manual setting required! • Weatherproof safety disconnect switch • Modular design provides design flexibility • Fully insulated casing

Blower:

18" forward curved, centrifugal blower. Pillow Block ball bearings. Galvanized finish. 4000-12000 CFM. 1-3/16" x 34" Shaft. 1450 max. RPM. Used in heated and non-heated supply fans.

Temp Control:

RTC Solutions • 40-90°F Discharge Temp Control • Field Wired On/Off Start Command

Intake:

Sloped Filtered Intake for Size #3 Modular Heater. 37.25" Wide X 51.625" Long X 35.188" High. Includes 2" MV EZ Kleen Metal Mesh Filter.

Filters:

6x MV EZ Kleen Metal Mesh Filter. 16"x 20"x 2" Used for heater and supply fan intakes. (3412)

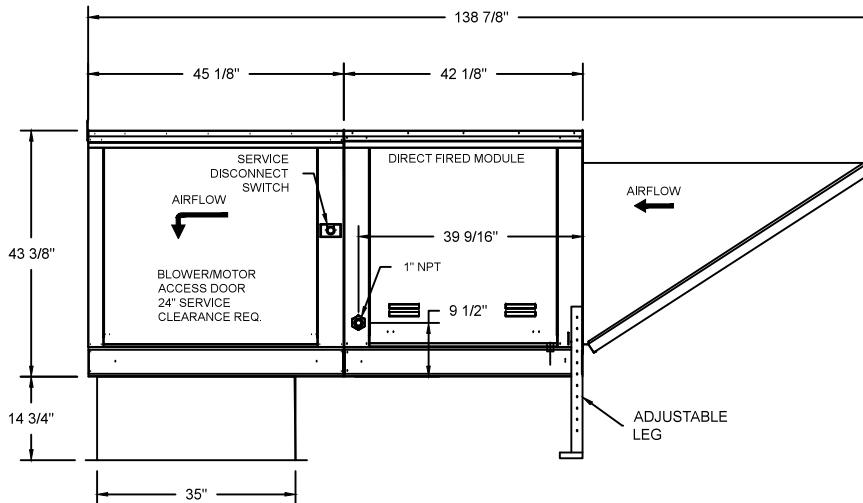
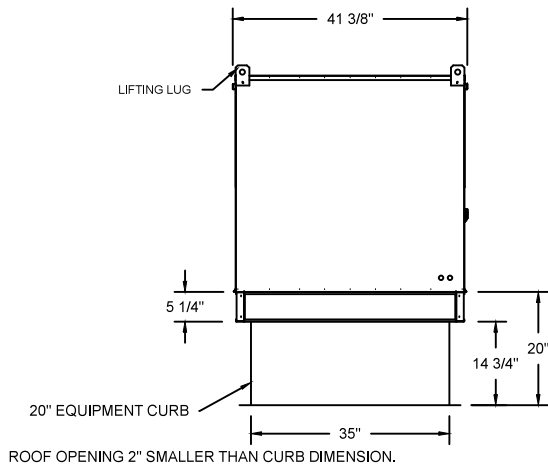
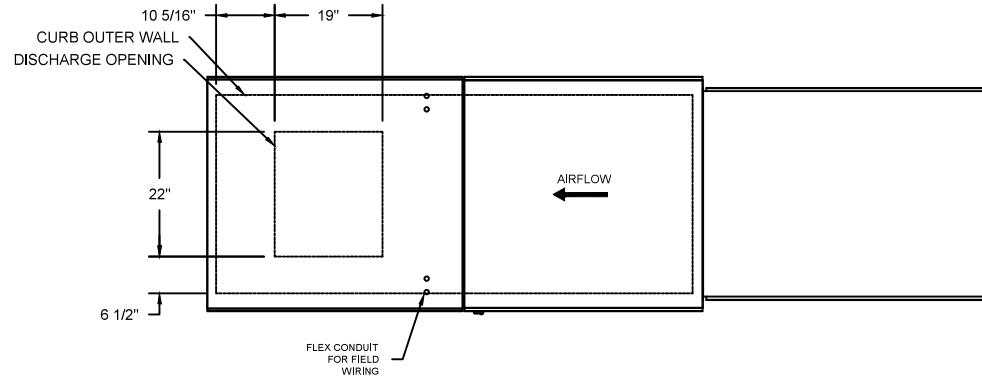
Selected Options:

- Motorized Back Draft Damper 30" X 30" for Size 3 Standard & Modular Heater Units w/Extended Shaft, Standard Galvanized Construction, 3/4" Rear Flange, Low Leakage, NFBUP-S Actuator Included
- Low Fire Start. Allows the burner circuit to energize when the modulation control is in a low fire position.
- Gas Pressure Gauge, 0-35", 2.5" Diameter, 1/4" Thread Size
- Gas Pressure Gauge, -5 to +15 Inches Wc., 2.5" Diameter, 1/4" Thread Size

TK3 DIRECT FIRED HEATER

1. DIRECT GAS FIRED HEATED MAKE UP AIR UNIT WITH 18" BLOWER AND 18" BURNER.
2. INTAKE HOOD WITH EZ FILTERS
3. DOWN DISCHARGE - AIR FLOW RIGHT -> LEFT
4. MOTORIZED BACK DRAFT DAMPER W/STANDARD GALVANIZED CONSTRUCTION, LOW LEAKAGE, NFBUP-S-ACTUATOR
5. LOW FIRE START. ALLOWS THE BURNER CIRCUIT TO ENERGIZE WHEN THE MODULATION CONTROL IS IN A LOW FIRE POSITION.
6. GAS PRESSURE GAUGE, 0-35"
7. GAS PRESSURE GAUGE, -5 TO +15 INCHES WC.

NOTE: SUPPLY DUCT MUST BE INSTALLED TO MEET SMACNA STANDARDS. A MINIMUM STRAIGHT DUCT LENGTH MUST BE MAINTAINED DOWNSTREAM OF UNIT DISCHARGE UNLESS OTHERWISE SPECIFIED. DO NOT RELY ON UNIT TO SUPPORT DUCT IN ANY WAY. FAILURE TO PROPERLY SIZE DUCTWORK MAY CAUSE SYSTEM EFFECTS AND REDUCE PERFORMANCE OF THE EQUIPMENT.

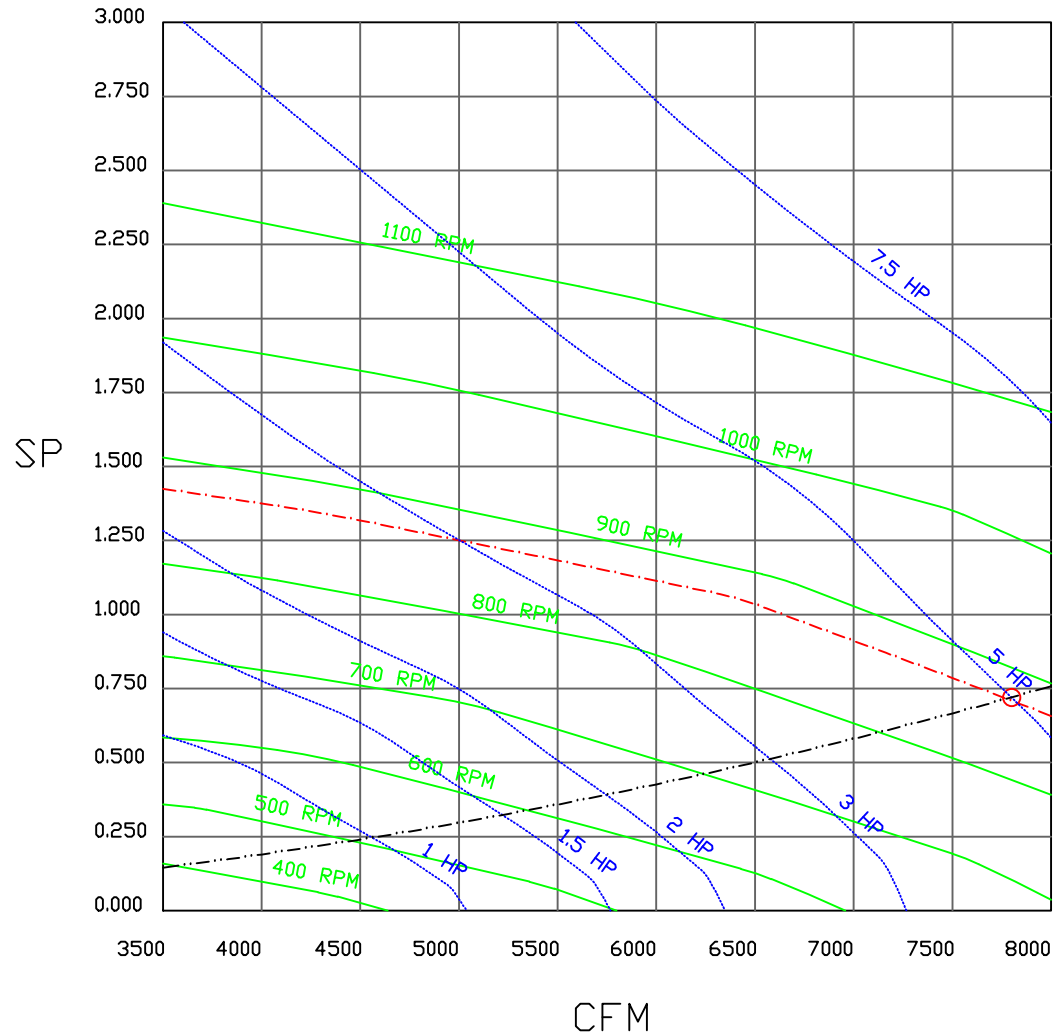


naks NORTH AMERICAN
KITCHEN SOLUTIONS
INCORPORATED

<i>JOB</i>	
<i>LOCATION</i>	
<i>DATE</i> 08/01/2018	<i>JOB #</i>
<i>DWG #</i> TK3	<i>DRAWN BY</i>
<i>REV.</i>	<i>SCALE</i>

(7800 5HP/3PH-208V) - HEATER PERFORMANCE CURVES.

7800 CFM, 0.72 SP @ 872 RPM and 4.781 BHP at 0 feet and 98 deg F
 * Please note that these curves were adjusted for job specific temperature and altitude.

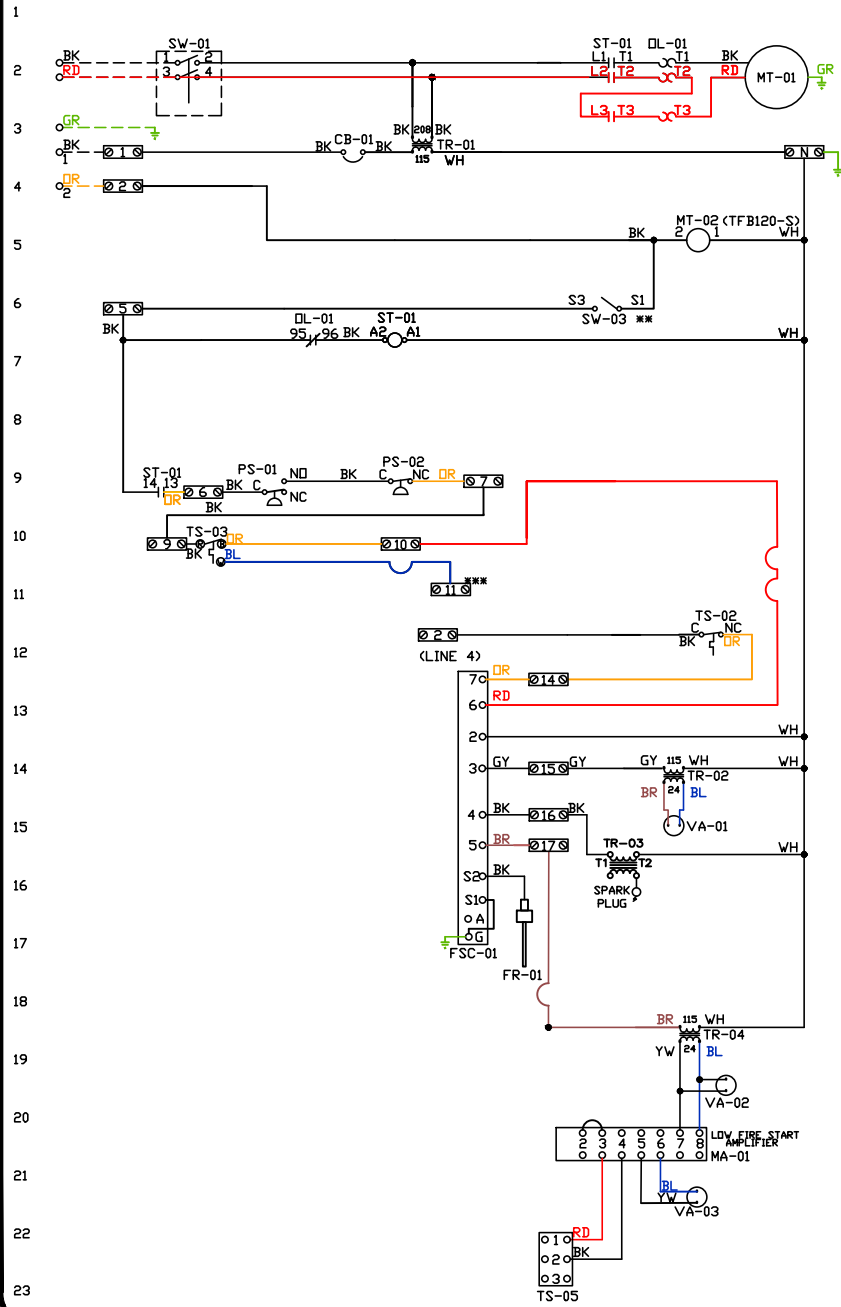


			JOB	
			LOCATION	
			DATE 8/3/2018	JOB #
			DWG #	DRAWN BY
			REV.	SCALE 3/8" = 1'-0"

ATTENTION ELECTRICIAN
 DROP FOR DISCONNECT CONNECTION
 IS FACTORY SUPPLIED
 CONNECT POWER TO THE DROP

Installed Options
 Field Wired Single Switch Control
 Motorized Back Drift Damper

Discharge Temp. Control



Label	Component Identification	Description	Location
CB-01	Circuit breaker (2amp)		[3]
FR-01	Fuse rod		[16]
FSC-01	Fireye FSC		[11-14]
MA-01	Modulating amplifier		[19]
MT-01	Supply motor		[2]
MT-02	Damper motor		[5]
DL-01	Supply motor overload		[2X7]
PS-01	Low Air-Flow Switch		[9]
PS-02	High Air-Flow Switch		[9]

ST-01	Supply motor contactor	[2X7X9]
SW-01	Main disconnect switch	[2]
SW-03	Damper end limit switch	[4]
TR-01	Power transformer(200v)	[3]
TR-02	Power transformer(20v)	[12]
TR-03	Lighting transformer	[14]
TR-04	Power transformer(20v)	[17]
TS-02	High temp limit switch	[10]
TS-03	Intake Air Sensor	[10]
TS-05	Discharge Air Sensor	[21]
VA-01	Pilot gas valve	[13]
VA-02	Main gas valve	[18]
VA-03	Modulating gas valve	[20]

MOTOR INFO
 SUPPLY SHP-208V-3P-15.0FLA
 CONTACTOR 100-C16D10
 OVERLOAD 193-11AC16

ELECTRICAL INFORMATION
 MOTOR/CTRL CIRCUIT FICAL 200A
 MOTOR/CTRL CIRCUIT MDP, 50A

NOTES
 - - - - DENOTES FIELD WIRING
 _____ DENOTES INTERNAL WIRING

** TERMINALS S4 AND S6 USED ON NF & AF SERIES ACTUATORS
 *** TERMINAL I1 PROVIDES COOLING CONNECTION

WIRE COLOR	SOCKET STYLE	FOLLOW RELAY	
BK - BLACK	YV - YELLOW	RD - RED	NO [2] 13
BL - BLUE	GR - GREEN	WH - WHITE	NC [2] 11
BR - BROWN	GY - GRAY	PK - PINK	NO [2] 17
DR - ORANGE	PR - PURPLE		COM [2] 13

Installation Wiring

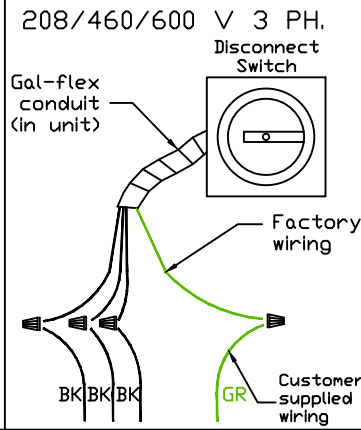
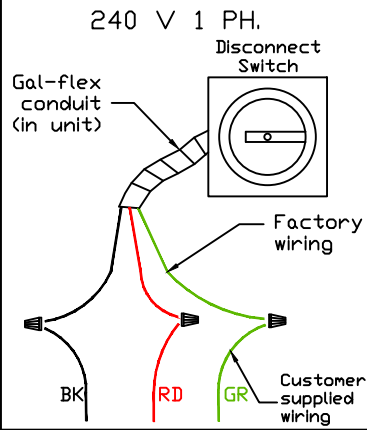
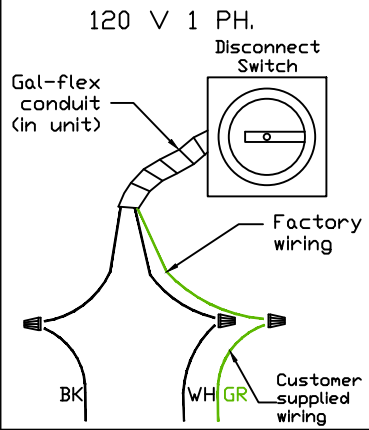
JOB NAKS Direct Fired MUA

DRAWING NUMBER

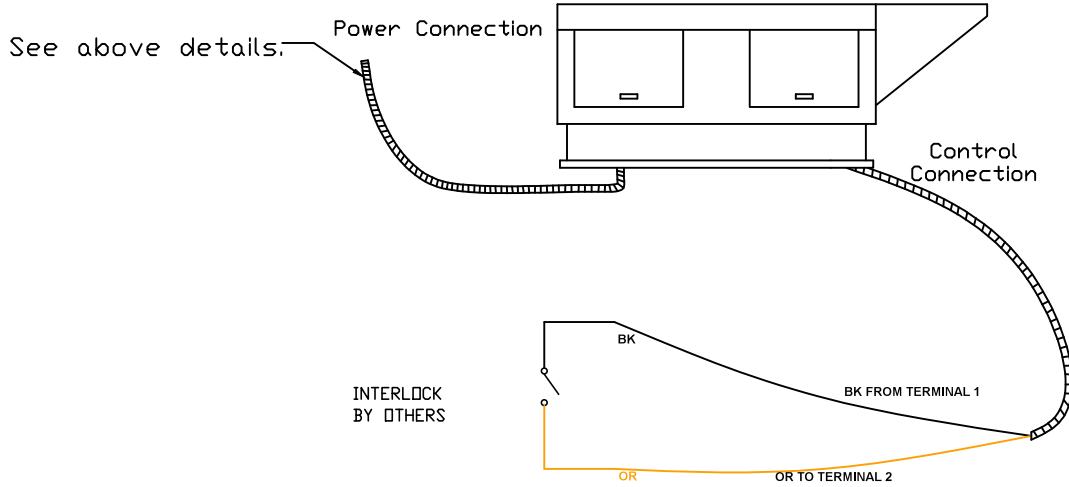
SHIP DATE

MODEL TK 1-5 Series

Installed Options



Field Wired On/Off Switch



NOTES

- WIRE COLOR
- BK - BLACK
 - BL - BLUE
 - BR - BROWN
 - OR - ORANGE
 - RD - RED
 - WH - WHITE
 - YW - YELLOW
 - GR - GREEN
 - GY - GRAY
 - PR - PURPLE
 - PK - PINK